

October 2017

Volume 1, Issue 8

# Sibley County Community Development

## ***Rural Child Care Innovation Program***

*"If employees can't find quality care for their children, they won't work for you. They won't move to your community, or they'll be forced to move away, or they might have to consider quitting their job to stay home with their children because they have no other option."*

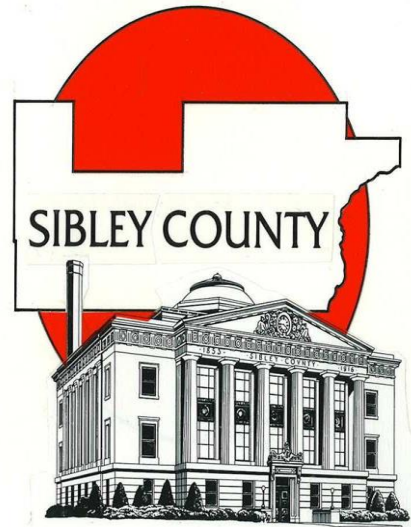
- Kris Bevell, Editor, Prairie Business Magazine

Sibley County faces a massive child care shortage. Arlington alone has a gap of 134 slots, followed by Gibbon which is short 62 slots, Henderson 54 slots, Winthrop 24 slots, and finally New Auburn is short 17 slots.

Survey results from 64 Sibley County parents show that 51.56 percent have been absent from work at their current employment due to their child care arrangement, 40.63 percent are unable to work overtime, 29.69 percent are tardy for work, 20.31 percent are unable to work different shifts, and 20.31 percent feel that they are unable to be fully productive.

***Due to these challenges, a Core Team from Sibley County has come together to implement a Community Solution Action Plan!***

***Please join our upcoming  
Town Hall Meeting  
6:30PM – 9:00PM, Thursday, November  
16, 2017  
Arlington Community Center,  
Arlington, MN***



### Upcoming events:

October 14<sup>th</sup> –  
Sibley County ACT on  
Alzheimer's Support Group  
10 am at CODE3 Bowling &  
Party in Gibbon.

October 14<sup>th</sup> –  
Arlington Fire Department  
Relief presents the Fall Block  
Party  
Music by the Rhythm Kings  
5:30 to 7 pm and IV Play 8  
pm. Boneless Pork Chop  
Dinner from 5:30 to 7:30 pm.

October 18<sup>th</sup> –  
Kids afternoon bowling at  
CODE3 in Gibbon from noon  
to 5:00 pm.

October 28<sup>th</sup> –  
GFW Bowling Tournament at  
CODE3.

October 29<sup>th</sup> –  
CODE3 Halloween Bash 2-  
5:00 pm.

October 30<sup>th</sup>  
Author Allen Eskens at the  
Gibbon Public Library at 6  
pm. Library will be open until  
6 pm for trick or treaters.



### New wedding venue in Sibley County

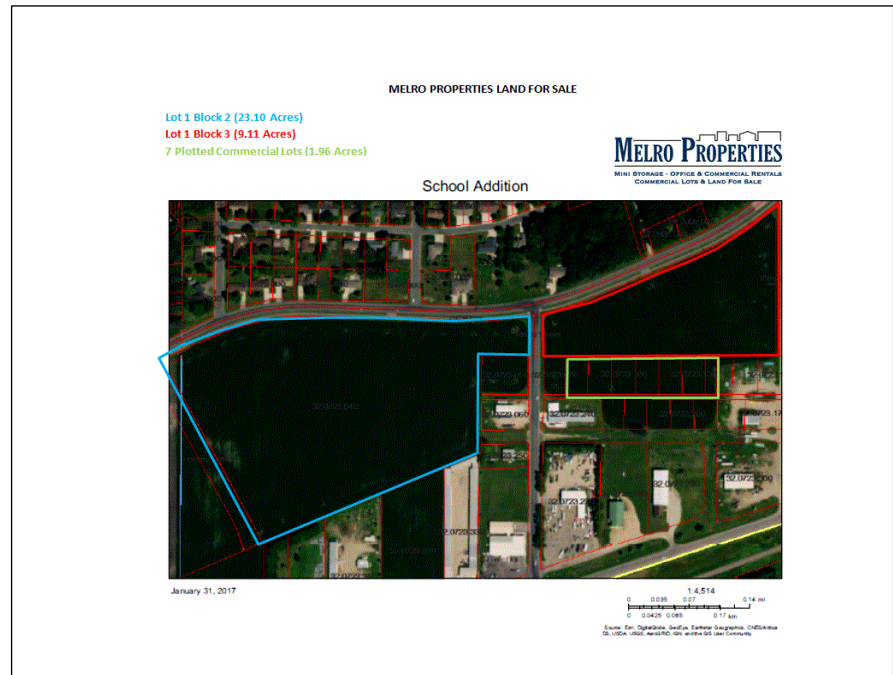
Scenic Escape Barn is a newly established event venue nestled in the hills of the Southern Minnesota River Valley just a few miles north of Henderson. The grounds feature room for 275 guests, on-site fully licensed salon and bridal room, abundant deck space, ceremony site, and an elegantly renovated barn that dates back to 1917.

Scenic Escape Barn partners exclusively with Chef Craig and his talented team of professionals.

For more information on about the event venue please contact Kelly or Ryan Horning at 612-205-3669 or [scenicescapebarn@gmail.com](mailto:scenicescapebarn@gmail.com)



## Land for Sale in Gaylord:



32.21 acres zoned residential, 7 plotted lots (1.96 acres) zoned commercial. South of Lincoln Avenue. For more information contact Dean Messner at 507-479-3453 or [melro383@gmail.com](mailto:melro383@gmail.com).

*The City of Green Isle has signed a purchase agreement with Timberline Woodproducts. Timberline Woodproducts has been making cabinets in a small shop in Hamburg for the past 17 years. Owner Bryan Malz plans to begin construction in the Green Isle Industrial Park in the spring of 2018.*

The Minnesota Department of Employment and Economic Development is requesting proposals for grants to local communities to increase the supply of quality child care providers in order to support regional economic development.

### Submission Deadline

Proposals are due by **4:00 p.m., Friday November 3, 2017.**

Send a copy of the proposal in PDF format via email to [brandon.toner@state.mn.us](mailto:brandon.toner@state.mn.us) with the subject line "Child Care Grant Proposal – [Organization Name]".

## MINNESOTA PRAIRIE LINE IN COLLABORATION WITH THE MVRRA CELEBRATES 15TH ANNIVERSARY OF REOPENING OF RAIL SERVICE

The Minnesota Prairie Line and Minnesota Valley Regional Rail Authority celebrated 15 years of rail service after the reopening by sponsoring special events in Franklin, Minn. on September 22 to thank its customers and the communities it serves who have helped make the railroad a success.

In January 2002, the Minnesota Prairie Line (MPL) was established as the agent/operator of a 94 mile rail line that serves communities between Norwood Young America, Minn. and Hanley Falls, Minn. This line is owned by the Minnesota Valley Regional Railroad Authority (MVRRA). The MPL is a wholly owned subsidiary of the Twin Cities & Western Railroad (TC&W).

The rail line provides a gateway to world markets for its rural communities. Last year (2016), customer products were shipped to/from over 40 U.S. states, Canada, Mexico, as well as oversees export markets.

MPL customers and communities have access to all Class 1 railroads serving the Minneapolis/St. Paul area (BNSF Railway, CN Railway, Canadian Pacific Railway, and Union Pacific Railroad Company), and major Mississippi River facilities in the Minneapolis/St. Paul area. Various transloading sites along the rail line allow those not located directly on rail all the advantages of shipping by rail. Since 2002, the first 34 miles of rail line has been improved with segments of heavier rail, and thousands of new rail ties with funding from several sources, including the State of Minnesota, MVRRA, shippers, along with contributions from TC&W and federal sources. Future plans include adding heavier rail to the remaining 60 miles so the entire 94 mile rail line can handle today's freight rail standards.

Being a publicly-owned rail line, collaboration with the various stakeholders has been key to the line's continued success. MPL works in partnership with the MVRRA and many other stakeholders to improve the rail line and provide enhanced rail service to its communities and customers. This in turn has led to private investment in rail served facilities, adding jobs to this corridor.

"We especially want to thank the customers and communities along the line and their elected representatives who have helped to provide a positive business environment, which led to investment and jobs," noted MPL President Mark Wegner. "This has allowed MPL to offer responsive and efficient rail service that is essential to rural America and attracts new business development."

3



In the picture from left to right.

Ron Antony (MVRRA Board - Yellow Medicine County Commissioner)  
Mark Wegner (Minnesota Prairie Line)  
Congressman Peterson  
Gary Kruggel (MVRRA Board - Sibley County Commissioner)  
Julie Rath (MVRRA Administrator)  
Tom Workman (MVRRA Board - Carver County Commissioner)  
Dennis Groebner (MVRRA Board - Redwood County Commissioner)  
Bob Fox (MVRRA Board Chair - Renville County Commissioner)

### Upcoming Events:

October 31<sup>st</sup> -  
Fright Night in Downtown  
Arlington  
5:30 - 7:00 pm.

October 31<sup>st</sup> -  
Trunk or Treat in Gibbon  
Gibbon Library Parking Lot  
5:30 to 7 pm

November 3<sup>rd</sup> -  
Henderson Ladies' Night Out  
and Toy Drive  
6-9 pm.

## Sibley County Community Development

400 Court Avenue  
PO Box 256  
Gaylord, MN 55334  
507-237-7800  
507-237-4358 fax  
amyn@co.sibley.mn.us

There are always more events happening in Sibley County than we can fit into the newsletter, so make sure you look at the **“THINGS TO DO”** section of the Sibley County website and like the Sibley County Facebook page.

Find us on the Web:  
[co.sibley.mn.us](http://co.sibley.mn.us)

Like Sibley County on Facebook!  
Scan the QR Code below!



## Leading Sibley Together

The Leading Sibley Together group is 24 strong this year! They began their year on September 7<sup>th</sup> in New Auburn. They toured historic Immanuel Lutheran Church, heard from the MN DNR, and toured a local salon. The second class was held on October 5<sup>th</sup> in Gibbon. They toured Starland Metals at the local Hutterite community, learned about the history of Town Ball, and toured the local library. Leading Sibley Together showcases the strengths in Sibley County while developing participants' leadership skills.



## November newsletter

Please submit your local economic development news and events to Amy Newsom at [AmyN@co.sibley.mn.us](mailto:AmyN@co.sibley.mn.us) or PO Box 256 by Friday, November 3rd to be included in our next Sibley County newsletter. The next newsletter will come out on Friday, November 10th.