

RECEIVED OCT 20 2017



*Protecting, maintaining and improving the health of all Minnesotans*

October 18, 2017

High Island Creek County Park  
c/o Mr. Tim Becker  
P.O. Box 897  
Gaylord, Minnesota 55334

Gentlemen/Ladies:

**SUBJECT: Sanitary Survey Report for High Island Creek County Park, PWSID 5720037**

Enclosed is the sanitary survey report summarizing the recent on-site inspection of your public water system. The sanitary survey includes a review of the system's water source, facilities, equipment, operation, and maintenance for the purpose of evaluating the adequacy of the system for producing and distributing safe drinking water.

This sanitary survey report includes the following information:

- identified deficiencies
- requirements and/or recommendations
- an inventory of potential contaminant sources found within 200 feet of your well(s)
- recommendations to assist you in effectively managing these potential contaminant sources in order to protect your water supply
- an inventory report related to the water system

Deficiencies may lead to a contamination of the water supply or failure of the system to maintain compliance with the Safe Drinking Water Act. Any deficiency identified in this report should be corrected promptly. Also, please take action to address additional requirements and recommendations.

For your convenience, an informational handout entitled *Isolation Distances from a Water-Supply Well* is also enclosed. Prior to determining the location of any new potential contaminant source, reference this handout to ensure that the proper isolation distances are met from all water-supply wells.

The enclosed report must be kept on file and made available for public review for not less than ten (10) years. If you have any questions regarding this report, please contact me at 507/344-2714.

Sincerely,

A handwritten signature in black ink, appearing to read "Rhonda Johnson", is written over a horizontal line.

Rhonda Johnson  
Noncommunity Public Water Supply Unit  
Environmental Health Division  
12 Civic Center Plaza, Suite 2105  
Mankato, Minnesota 56001

RJ  
Enclosures





**MINNESOTA DEPARTMENT OF HEALTH**  
**Section of Drinking Water Protection**  
**Sanitary Survey Report**



System Name: <b>High Island Creek County Park</b> PWSID: <b>5720037</b> System Contact: <b>Tim Becker</b>	Survey Date: <b>10/16/2017</b> Surveyor: <b>Rhonda Johnson</b> PWS Type: <b>Transient Noncommunity</b>
---	--

**Requirements and Recommendations**

**Water Source**

As a reminder, it is required that all water well construction, well sealing, or alteration/repair work be performed by a water well contractor who is licensed in Minnesota. [Minn. Rules, Chapter 4725].

**Pumps/Pump Facilities and Controls**

Not applicable.

**Treatment**

Not applicable.

**Water Storage**

Not applicable.

**Distribution**

No deficiencies observed.

**Monitoring/Reporting Data Verification**

No deficiencies observed.

**Water System Management/Operation**

As a reminder, prior to the construction or alteration of a public water supply system, it is required that complete plans and specifications be submitted to the Minnesota Department of Health Drinking Water Protection Section for approval. This includes plans for treatment, pumping, storage, and related facilities. [Minn. Rules, 4720.0010]

**Operator Compliance with State Requirements**

Not applicable.



**MINNESOTA DEPARTMENT OF HEALTH**  
**Section of Drinking Water Protection**  
**Sanitary Survey Report**



System Name: **High Island Creek County Park**

PWSID: **5720037**

System Contact: **Tim Becker**

Survey Date: **10/16/2017**

Surveyor: **Rhonda Johnson**

PWS Type: **Transient Noncommunity**

**Wellhead Protection**

In accordance with Minn. Rules 4720.5110 and 4725.4450, a public water supplier must:

- 1) Maintain the isolation distances for new potential contaminant sources located around a public water supply well(s).
- 2) Monitor potential contaminant sources that were in existence, recorded, or authorized before May 10, 1993, and are not in compliance with the isolation distances established in Minn. Rules 4725.4450.
- 3) Implement wellhead protection (WHP) measures for potential contaminant sources located within 200 feet of public water supply wells. WHP measures are methods to prevent the contamination of a public water supply system.

To assist you in complying with the preceding requirements, the Minnesota Department of Health has inventoried potential contaminant sources within 200 horizontal feet of your public water supply well(s) and provided a list of suggested WHP measures.

Potential contaminant sources identified:

No Potential Contaminant sources identified at this time



**MINNESOTA DEPARTMENT OF HEALTH**  
**SECTION OF DRINKING WATER PROTECTION**  
**Public Water Supply Inventory Report**



System Name: <b>High Island Creek County Park</b>	Survey Date: <b>10/16/2017</b>
PWSID: <b>5720037</b>	Surveyor: <b>Rhonda Johnson</b>
System Contact: <b>Tim Becker</b>	PWS Type: <b>Transient Noncommunity</b>

**Contact Information**

<u>Name</u>	<u>Address</u>	<u>Phone/Email</u>
<b>Contact</b> Tim Becker		Business Phone 1 507/237-4093

**Sample Bottles/General Correspondence**  
 High Island Creek County Park c/o Mr. Tim Becker  
 P.O. Box 897  
 Gaylord, MN 55334

**Classification Information**

Owner Type:	County	Population:	50
System Class:	Not applicable	Service Connections:	1
Service Area Characteristics: Recreation Area			

**Source Information**

<u>Well #1</u>	
Unique Well No.: 00261527	Source Type: Groundwater
Type: Well	Pump Capacity (gpm):
Status: Active	Pumping Rate (gpm):
Availability: Primary	Static Depth (ft):
Year Constructed: 1972	Drawdown (ft):
Well Depth (ft):	Pump Type: Handpump
Casing Depth (ft):	
Casing Diameter (in):	
Screen Length (ft):	
Aquifer:	

**Other Facilities**

<u>Distribution System</u>	
Type: Distribution System	Source Type: Groundwater

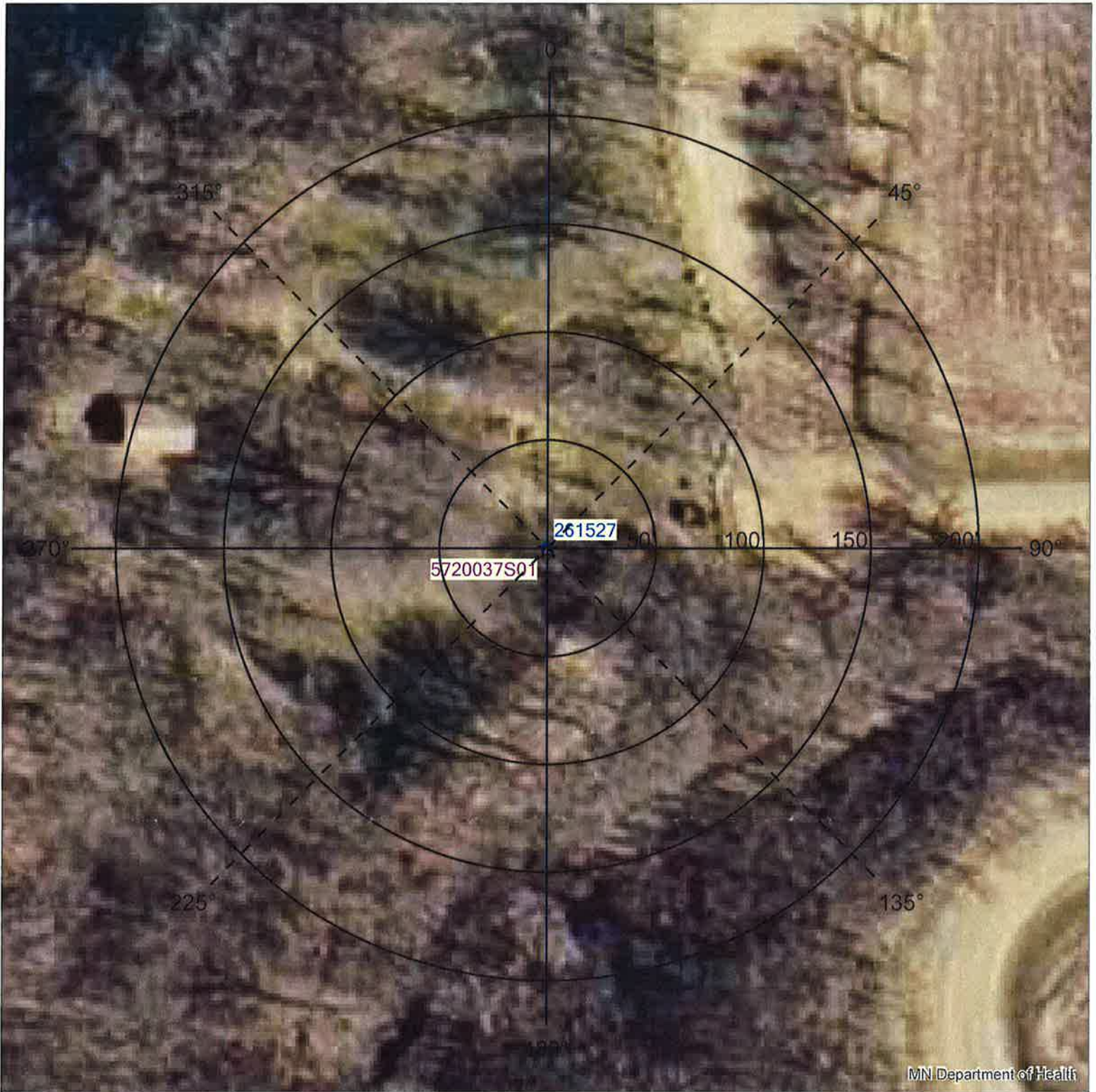


Unique Well No.: 261527 - PWSID and Source No.: 5720037S01

Current Location: 08/25/2000 (R. Rasmussen)

High Island Creek County Park #1

T113N R26W S21 - Jessenland Township - Sibley County



Air Photo Sources:  
MnGeo WMS server  
(2011 color south MN)

**Public Water Supply Sources**

- ★ Transient Non-Community PWS
- Unsealed County Well Index







# ISOLATION DISTANCES FROM A WATER-SUPPLY WELL

Minnesota Rules, Chapter 4725, Rules Relating to Wells and Borings  
 Minnesota Department of Health (MDH), Well Management Section, Environmental Health Division  
 625 North Robert Street, P.O. Box 64975, St. Paul, Minnesota 55164-0975  
 651-201-4600 or 800-383-9808  
[www.health.state.mn.us/divs/eh/wells](http://www.health.state.mn.us/divs/eh/wells)

The isolation distances below are from Minnesota Rules, chapter 4725. Distances must be measured horizontally from the water-supply well. Minnesota Statutes, section 1031.205, subdivision 6, prohibits constructing, placing, or installing an actual or potential contaminant source from a well that is less than the minimum distance prescribed by rule. The minimum isolation distances must be maintained between a new well and a contamination source no longer in use, unless all contaminant sources and contaminated soils are removed. Additional information and explanations can be found in the *Rules Handbook, A Guide to the Rules Relating to Wells and Borings* or contact the Well Management Section at the number above.

Absorption area of a soil dispersal system average flow is greater than 10,000 gallons/day	300 feet <sup>1</sup>
serving a facility handling infectious or pathological wastes	150 feet <sup>1</sup>
average flow 10,000 gallons/day or less	50 feet <sup>1</sup>
Agricultural chemical tank or container with 25 gallons or more or 100 pounds or more dry weight, or equipment filling or cleaning area without safeguards	150 feet
storage or equipment filling or cleaning area with safeguards	100 feet
storage or equipment filling or cleaning area with safeguards and roofed	50 feet
buried piping	50 feet
multiple tanks or containers for residential retail sale or use, no single tank or container exceeding, but aggregate volume exceeding 56 gallons or 100 pounds dry weight	50 feet
Anhydrous ammonia tank	50 feet
Animal feedlot, unroofed, 300 or more animal units	100 feet <sup>1</sup>
feedlot, more than 1.0, but less than 300 animal units	50 feet <sup>1</sup>
building or poultry building, including a horse riding area, more than 1.0 animal unit	50 feet <sup>1</sup>
rendering plant	50 feet
feeding or watering area within a pasture, more than 1.0 animal unit	50 feet <sup>1</sup>
area to bury more than one animal unit	50 feet
building, feedlot, confinement area, or kennel, 0.1 to 1.0 animal unit	20 feet <sup>1,2</sup>
Building, building projection, deck, overhang, permanent structure	3 feet <sup>1</sup>
Cesspool	75 feet <sup>1</sup>
Cistern or reservoir, buried, nonpressurized water supply	20 feet
Commercial compost site	50 feet
Construction or demolition debris disposal area	50 feet <sup>1</sup>
Cooling water pond, industrial	50 feet <sup>1</sup>
Deicing chemicals, bulk road	50 feet <sup>1</sup>

Drainfield (see Absorption area)	75 feet <sup>1</sup>
Dry well (sewage)	10 feet <sup>4</sup>
Electric transmission line	50 feet
Electrical transformer storage area, oil-filled	50 feet
Elevator boring, not conforming to rule	20 feet
conforming to rule	20 feet
Fertilizer chemigation tank, safeguarded, from irrigation well only	20 feet <sup>5</sup>
Floor drain, grate, or trough connected to a buried sewer	50 feet
if buried sewer is air-tested, approved materials, serving one building, or two or less single-family residences	20 feet <sup>2</sup>
Frost-proof yard hydrant or discharge of a frost-proof hydrant draining into the soil, fire hydrant or flushing hydrant	10 feet
Gas (flammable or volatile) pipe	10 feet <sup>4</sup>
Grave or mausoleum	50 feet
Gravel pocket or French drain for clear water drainage	20 feet
Gray-water dispersal area	50 feet <sup>1</sup>
Hazardous substance tank or container, above ground or underground, 56 gallons or more, or 100 pounds or more dry weight, without safeguards	150 feet
tank or container, above ground or underground, 56 gallons or more, or 100 pounds or more dry weight with safeguards	100 feet
buried piping	50 feet
multiple storage tanks or containers for residential retail sale or use, no single tank or container exceeding 56 gallons or 100 pounds, but aggregate volume exceeding	50 feet
Horizontal ground source closed loop heat exchanger buried piping	50 feet
Horizontal ground source closed loop heat exchanger buried piping and horizontal piping, approved materials and heat transfer fluid	10 feet <sup>2</sup>
Household solid waste disposal area, single residence	50 feet <sup>1</sup>
Interceptor, including a flammable waste or sediment	50 feet
Land spreading area for sewage, septage, or sludge	50 feet <sup>1</sup>
Landfill or dump, mixed municipal solid waste from multiple persons	300 feet <sup>1</sup>
Landfill, permitted demolition debris	300 feet <sup>1</sup>
Leaching pit	75 feet <sup>1</sup>
Liquid propane (LP) tank	10 feet <sup>4</sup>

Manure (liquid) storage basin or lagoon	unpermitted or noncertified	300 feet <sup>1</sup>
approved earthen liner		150 feet <sup>1</sup>
approved concrete or composite liner		100 feet <sup>1</sup>
Manure (solid) storage area, not covered with a roof		100 feet <sup>1</sup>
Ordinary high water level of a stream, river, pond, storm water retention pond, lake, or reservoir		35 feet <sup>2</sup>
<b>Petroleum</b>		
tank or container, 1100 gallons or more, without safeguards		150 feet
tank or container, 1100 gallons or more, with safeguards		100 feet
tank or container, buried, between 56 and 1100 gallons		50 feet
tank or container, not buried, between 56 and 1100 gallons		20 feet <sup>6</sup>
buried piping		50 feet
Petroleum or crude oil pipeline to a refinery or distribution center		100 feet
Pit or unfilled space more than 4 feet in depth		20 feet
Pollutant or contaminant that may drain into the soil		50 feet <sup>1</sup>
Privy, nonportable		50 feet <sup>1</sup>
portable (privy) or toilet		20 feet <sup>2</sup>
Sand filter, watertight; peat filter; or constructed wetland		50 feet
Scrap yard		50 feet
Seepage pit		75 feet <sup>1</sup>
Septic tank		50 feet
Sewage holding tank, watertight		50 feet
Sewage sump		50 feet
capacity 100 gallons or more		50 feet
capacity less than 100 gallons, tested, conforming to rule		20 feet <sup>2</sup>
Sewage treatment device, watertight		50 feet
Sewer, buried		50 feet
collector, municipal, serving a facility handling infectious or pathological wastes, open-jointed or unapproved materials		50 feet
approved materials, tested, serving one building, or two or less single-family residences		20 feet <sup>2</sup>
Solid waste transfer station		50 feet
Storm water drain pipe, 8 inches or greater in diameter		20 feet <sup>2</sup>
Swimming pool, in-ground		20 feet
Unused, unsealed well or boring		50 feet
Vertical heat exchanger (vertical) piping, conforming to rule		35 feet <sup>2</sup>
horizontal piping conforming to rule		10 feet <sup>2</sup>
Wastewater rapid infiltration basin, municipal or industrial		300 feet <sup>1</sup>
Wastewater spray irrigation area, municipal or industrial		150 feet <sup>1</sup>

Wastewater stabilization pond		
municipal, 500 or more gallons/acre/day of leakage		300 feet <sup>1</sup>
municipal, less than 500 gallons/acre/day of leakage		150 feet <sup>1</sup>
industrial		150 feet <sup>1</sup>
Wastewater treatment unit tanks, vessels and components (package plant)		100 feet
Water treatment backwash disposal area		50 feet <sup>1</sup>
Water treatment backwash holding basin, reclaim basin, or surge tank with a direct sewer connection		50 feet
with a backflow protected sewer connection		20 feet

**Additional Isolation Distances for  
Community Public Water-Supply Wells**

Highest water or flood level	50 feet
Property line, unless legally controlled through an easement	50 feet

1 A sensitive water-supply well must be located at least twice the indicated distance.

A sensitive water-supply well is a well with less than 50 feet of watertight casing, and which is not cased below a confining layer or confining materials of at least 10 feet in thickness.

2 A community public water-supply well must be a minimum of 50 feet from this contamination source.

3 A well or boring may not be constructed inside a building except as provided for by Minnesota Rules, part 4725.2175.

4 A well or boring may be located between 5 and 10 feet of an electric transmission line, gas pipe or LP tank if the well or boring is placarded, and work is not performed on the well or boring unless the electric line is deenergized and grounded or shielded, and the LP tank does not contain flammable gas.

5 The 20-foot distance applies only to an irrigation well and a fertilizer chemigation supply tank meeting the requirements of Minnesota Rules, chapter 1505.

6 A community public water-supply well must be a minimum of 50 feet from a petroleum tank or container, unless the tank or container is used for emergency pumping and is located in a room or building separate from the community well; and is of double-wall construction with leak detection between walls; or is protected with secondary containment.

Visit MDH Well Management Section website at: [www.health.state.mn.us/divs/eh/wells](http://www.health.state.mn.us/divs/eh/wells).  
Visit Minnesota Rules, chapter 4725 website at: [www.revisor.mn.gov/rules/?id=4725](http://www.revisor.mn.gov/rules/?id=4725).  
Visit Minnesota Statutes, chapter 1031 website at: [www.revisor.mn.gov/statutes/?id=1031](http://www.revisor.mn.gov/statutes/?id=1031).

To request this document in another format call 651-201-4600.